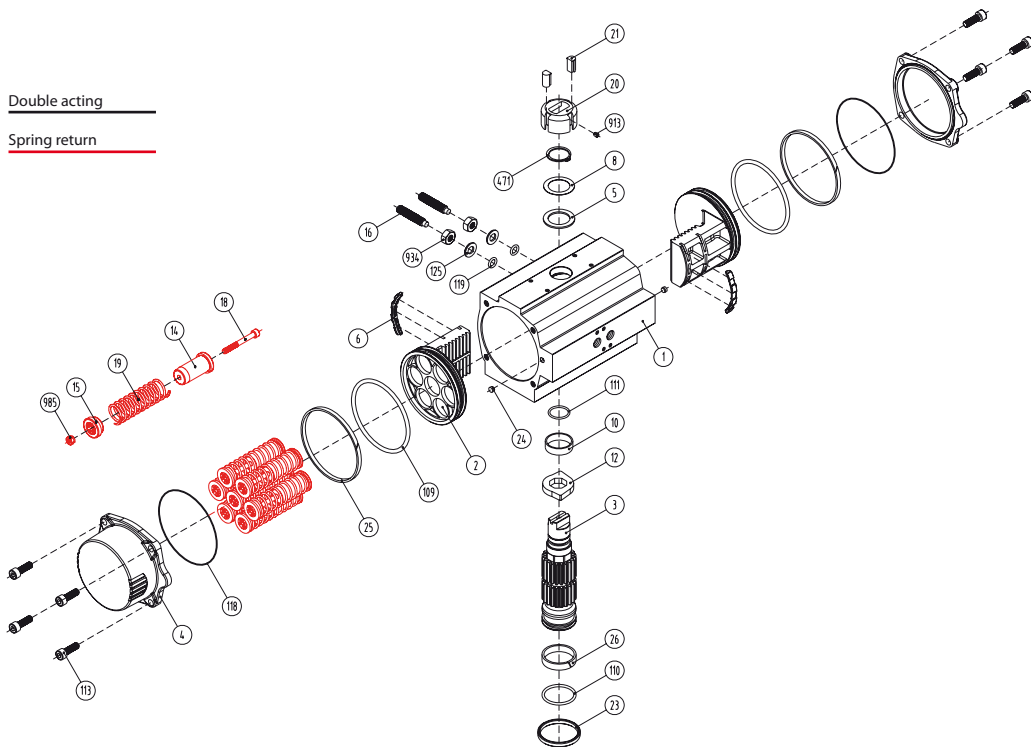


Double acting

Spring return



Dimensions*

A	A'	B	C	D	E	F	I	R	ØS	ISO	ØL	M x V	ØT	X	U
218	177	137	111	66	55	12	8	17	22,5	F05	50	M6 x 10	55	3	19

Max. pressure	Rotation		Screw stroke adjustment		Chamber Ø (mm)		Air volume (L)		Stroke Time (Sec. (A))		Operating Temperature (°C)		
	Opening	Closing	Opening	Closing	Opening	Closing	Opening	Closing	STD (std.)	HT (high temp.)	LT (low temp.)		
8 bar	90° ± 5°		for 1° need 1/3 turn		80		0,64	0,47	D 0,11	D 0,10	NBR O-ring	FPM O-ring	Silicone O-ring
									S 0,27	S 0,40	-30°...+100°C	-15°...+150°C	-40°...+80°C

Double acting actuator „DA“ torque output in [Nm]

Typ	3 bar		3,5 bar		4 bar		4,5 bar		5 bar		5,5 bar		6 bar ²		6,5 bar		7 bar		8 bar		Kg
	0°	90°	0°	90°	0°	90°	0°	90°	0°	90°	0°	90°	0°	90°	0°	90°	0°	90°	0°	90°	
D	38,5	44,9	51,3	57,7	64,1	70,5	77	83	90	103	103	103	103	103	103	103	103	103	103	103	3,0

Spring return actuator „SR“ torque output in [Nm]

Typ	3 bar		3,5 bar		4 bar		4,5 bar		5 bar		5,5 bar		6 bar (A)		6,5 bar		7 bar		8 bar		Spring stroke		Kg
	0°	90°	0°	90°	0°	90°	0°	90°	0°	90°	0°	90°	0°	90°	0°	90°	0°	90°	0°	90°	End	Start	
S04	31	27	38	34	44	40	50	46	57	53	63	59	70	66	76	72	82	78	95	91	9	13	3,28
S06	27	21	34	28	40	34	47	41	53	47	59	53	66	60	72	66	79	73	92	86	13	20	3,36
S08					37	29	43	35	49	41	56	48	62	54	69	61	75	67	88	80	17	27	3,43
S10							39	29	46	36	52	42	59	49	65	55	71	61	84	74	22	33	5,51
S12									42	30	48	36	55	43	61	49	68	56	81	69	26	40	3,58
S14 ²											45	31	51	37	58	44	64	50	77	63	30	47	3,65

²Standard construction

Materials

1	Body	Aluminium hard anodized
2	Piston	Aluminium
3	Pinion	Nickel plated carbon steel
4	End caps	Aluminium epoxy coated
5	Soft piston washer	Polyamide PA 6,6
6	Slide piston	Polyamide PA 6,6 + 30% G.F.
8	Pinion washer	Stainless steel
10	Upper pinion bearing	Hostalen RCH 1000
12	Stop	ASTMA 105
14	(*) Springs long support	Polyamide PA 6,6
15	(*) Springs short support	Polyamide PA 6,6
16	Leveling screw	Stainless steel
18	(*) Bolt	Stainless steel
19	(*) Spring	DIN 2076 - D-5,6
20	Position indicator	Polyamide
21	Cam	Polyamide
23	Centering ring	Nickel plated carbon steel
24	Plug air stop	NBR
25	Slide guide	Polyamide PA 6,6 + 30% G.F.
26	Lower pinion bearing	Hostalen RCH 1000
109	O-ring	NBR
110	O-ring	NBR
111	O-ring	NRB
113	Bolt	Stainless steel
118	O-ring	NBR
119	O-ring	NBR
125	Washer	Stainless steel
913	Set screw	Stainless steel
471	External circlip	Stainless steel
934	Nut	Stainless steel
985	(*) Nut	Stainless steel

(*) Only for serie SR

General characteristics

Mounting of solenoid valves	Namur Std.	
Mounting of devices	Namur V DI	Namur V DE 3845 Std.
Coupling according	ISO 5211	DIN 3337
Marking	CE	Ex II 2 GdC LCIE 05 AR 022
Test and certificates		
Quality assurance	ISO 9001	

SR80 / DA80

copyright © by
FERGO® Armaturen GmbH

Mainstrasse 26-30
D41469 Neuss

Tel.: +49(0) 2137 - 9 30 80-0
Fax: +49(0) 2137 - 9 30 80-99

Web: www.fergo.biz
E-Mail: info@fergo.biz

fergo