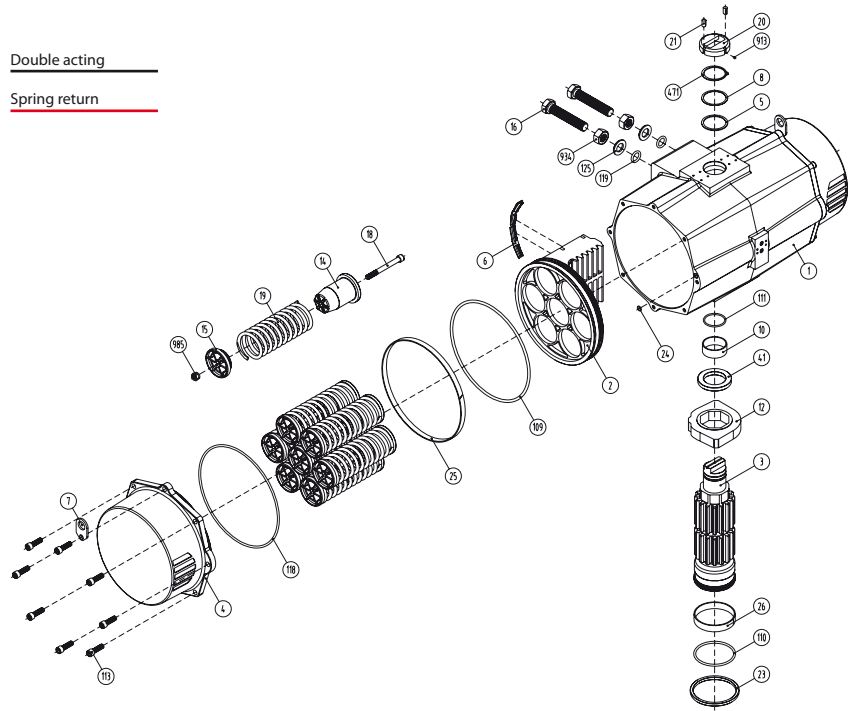


Double acting  
Spring return



Dimensions\*

A	A'	B	C	D	E	F	I	R	ØS	ISO	ØL	M x V	ØT	X	U
738	518	383	356	177,5	176,5	16	15	46	60,2	F16	165	M20 x 29	130	4	58

Max. pressure	Rotation	Screw stroke adjustment	Chamber Ø (mm)	Air volume (L)		Stroke Time (Sec. (A))		Operating Temperature (°C)		
				Opening	Closing	Opening	Closing	STD (std.)	HT (high temp.)	LT (low temp.)
8 bar	90° ± 5°	for 1° need 1/3 turn	300	25	32	D 2,8 S 3,8	D 3,1 S 4,2	NBR O-ring -30°...+100°C	FPM O-ring -15°...+150°C	Silicone O-ring -40°...+80°C

Double acting actuator „DA“ torque output in [Nm]

Typ	3 bar		3,5 bar		4 bar		4,5 bar		5 bar		5,5 bar		6 bar <sup>2</sup>		6,5 bar		7 bar		8 bar		Kg
	0°	90°	0°	90°	0°	90°	0°	90°	0°	90°	0°	90°	0°	90°	0°	90°	0°	90°	0°	90°	
D	1730	2019	2307	2596	2884	3172	3461	3749	4038	4614											69,6

Spring return actuator „SR“ torque output in [Nm]

Typ	3 bar		3,5 bar		4 bar		4,5 bar		5 bar		5,5 bar		6 bar (A)		6,5 bar		7 bar		8 bar		Spring stroke		Kg
	0°	90°	0°	90°	0°	90°	0°	90°	0°	90°	0°	90°	0°	90°	0°	90°	0°	90°	0°	90°	End	Start	
S06	1299	1045	1587	1333	1876	1622	2164	1910	2453	2199	2741	2487	3029	2775	3318	3064	3606	3352	4183	3929	508	806	85,9
S08	1155	816	1444	1105	1732	1393	2020	1682	2309	1970	2597	2258	2886	2547	3174	2835	3462	3124	4039	3700	677	1075	89,4
S10			1300	876	1588	1165	1877	1453	2165	1742	2453	2030	2742	2318	3030	2607	3319	2895	3895	3472	846	1344	92,9
S12					1444	936	1733	1225	2021	1513	2310	1802	2598	2090	2886	2378	3175	2667	3752	3243	1015	1613	96,4
S14 <sup>2</sup>							1589	996	1877	1285	2166	1573	2454	1861	2742	2150	3031	2438	3608	3015	1184	1882	99,9

<sup>2</sup>Standard construction

Materials

1	Body	Aluminium hard anodized
2	Piston	Aluminium
3	Pinion	Nickel plated carbon steel
4	End caps	Aluminium epoxy coated
5	Soft piston washer	Polyamide PA 6,6
6	Slide piston	Polyamide PA 6,6 + 30% G.F.
8	Pinion washer	Stainless steel
10	Upper pinion bearing	Hostalen RCH 1000
12	Stop	ASTMA 105
14	(*) Springs long support	Polyamide PA 6,6
15	(*) Springs short support	Polyamide PA 6,6
16	Leveling screw	Stainless steel
18	(*) Bolt	Stainless steel
19	(*) Spring	DIN 2076 - D-5,6
20	Position indicator	Polyamide
21	Cam	Polyamide
23	Centering ring	Nickel plated carbon steel
24	Plug air stop	NBR
25	Slide guide	Polyamide PA 6,6 + 30% G.F.
26	Lower pinion bearing	Hostalen RCH 1000
109	O-ring	NBR
110	O-ring	NBR
111	O-ring	NRB
113	Bolt	Stainless steel
118	O-ring	NBR
119	O-ring	NBR
125	Washer	Stainless steel
913	Set screw	Stainless steel
471	External circlip	Stainless steel
934	Nut	Stainless steel
985	(*) Nut	Stainless steel

(\*) Only for serie SR

General characteristics

Mounting of solenoid valves	Namur Std.
Mounting of devices	Namur V DI Namur V DE 3845 Std.
Coupling according	ISO 5211 DIN 3337
Marking	CE  II 2 GDC LCIE 05 AR 022
Test and certificates	
Quality assurance	ISO 9001