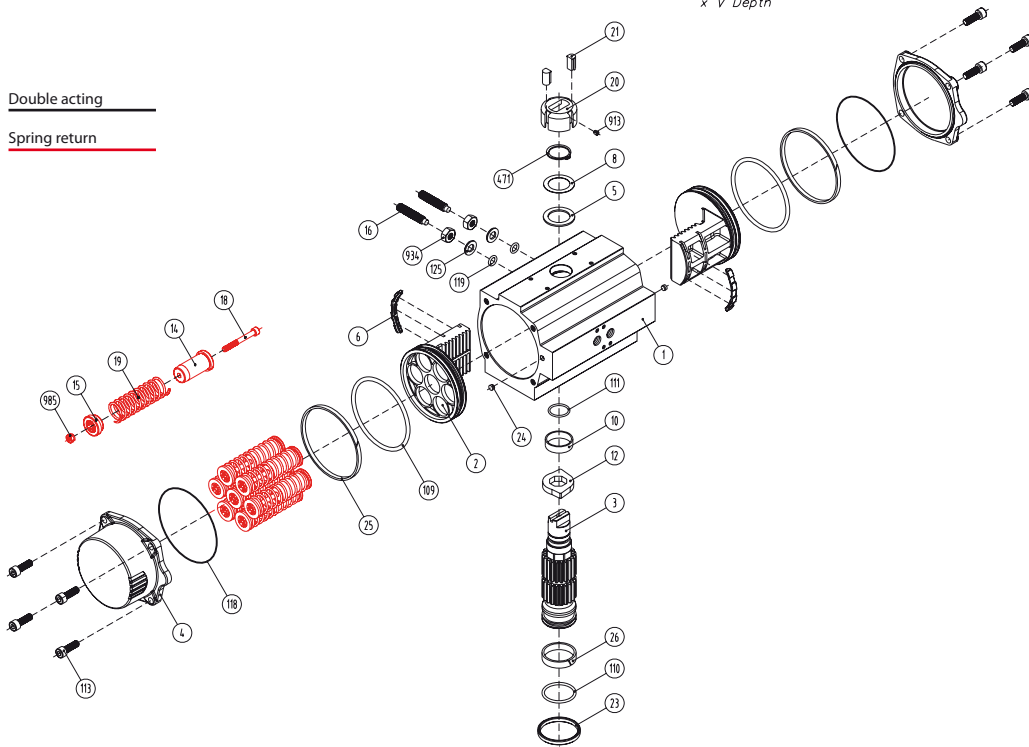


Double acting

Spring return



Dimensions\*

A	A'	B	C	D	E	F	I	R	ØS	ISO	ØL	M x V	ØT	X	U
601	461	280	242,5	313	130	16	15	36	48,5	F14	140	M16 x 26	100	4	50

Max. pressure	Rotation		Screw stroke adjustment		Chamber Ø (mm)	Air volume (L)		Stroke Time (Sec. (A))		Operating Temperature (°C)		
	Opening	Closing	Opening	Closing		Opening	Closing	STD (std.)	HT (high temp.)	LT (low temp.)		
8 bar	90° ± 5°		for 1° need 1/3 turn		210	9,8	9,3	D 1,8	D 2,0	NBR O-ring	FPM O-ring	Silicone O-ring
								S 2,8	S 3,2	-30°...+100°C	-15°...+150°C	-40°...+80°C

Double acting actuator „DA“ torque output in [Nm]

Typ	3 bar		3,5 bar		4 bar		4,5 bar		5 bar		5,5 bar		6 bar <sup>2</sup>		6,5 bar		7 bar		8 bar		Kg
	0°	90°	0°	90°	0°	90°	0°	90°	0°	90°	0°	90°	0°	90°	0°	90°	0°	90°	0°	90°	
D	707		824		942		1060		1178		1295		1413		1531		1649		1884		32,5

Spring return actuator „SR“ torque output in [Nm]

Typ	3 bar		3,5 bar		4 bar		4,5 bar		5 bar		5,5 bar		6 bar (A)		6,5 bar		7 bar		8 bar		Spring stroke		Kg
	0°	90°	0°	90°	0°	90°	0°	90°	0°	90°	0°	90°	0°	90°	0°	90°	0°	90°	0°	90°	End	Start	
S06	477	349	595	466	712	584	830	702	948	820	1066	937	1183	1055	1301	1173	1419	1291	1654	1526	270	421	39,3
S08	400	229	518	347	636	465	754	582	871	700	989	818	1107	936	1225	1053	1342	1171	1578	1407	360	562	41,0
S10			441	228	559	345	677	463	795	581	912	699	1030	316	1178	934	1266	1052	1501	1287	451	702	42,7
S12							600	344	718	461	836	579	954	697	1071	715	1189	933	1425	1168	541	843	44,4
S14 <sup>2</sup>									642	342	759	460	877	578	995	695	1113	813	1348	1049	631	983	46,0

<sup>2</sup>Standard construction

Materials

1	<b>Body</b>	Aluminium hard anodized
2	<b>Piston</b>	Aluminium
3	<b>Pinion</b>	Nickel plated carbon steel
4	<b>End caps</b>	Aluminium epoxy coated
5	<b>Soft piston washer</b>	Polyamide PA 6,6
6	<b>Slide piston</b>	Polyamide PA 6,6 + 30% G.F.
8	<b>Pinion washer</b>	Stainless steel
10	<b>Upper pinion bearing</b>	Hostalen RCH 1000
12	<b>Stop</b>	ASTMA 105
14	<b>(*) Springs long support</b>	Polyamide PA 6,6
15	<b>(*) Springs short support</b>	Polyamide PA 6,6
16	<b>Leveling screw</b>	Stainless steel
18	<b>(*) Bolt</b>	Stainless steel
19	<b>(*) Spring</b>	DIN 2076 - D-5,6
20	<b>Position indicator</b>	Polyamide
21	<b>Cam</b>	Polyamide
23	<b>Centering ring</b>	Nickel plated carbon steel
24	<b>Plug air stop</b>	NBR
25	<b>Slide guide</b>	Polyamide PA 6,6 + 30% G.F.
26	<b>Lower pinion bearing</b>	Hostalen RCH 1000
109	<b>O-ring</b>	NBR
110	<b>O-ring</b>	NBR
111	<b>O-ring</b>	NRB
113	<b>Bolt</b>	Stainless steel
118	<b>O-ring</b>	NBR
119	<b>O-ring</b>	NBR
125	<b>Washer</b>	Stainless steel
913	<b>Set screw</b>	Stainless steel
471	<b>External circlip</b>	Stainless steel
934	<b>Nut</b>	Stainless steel
985	<b>(*) Nut</b>	Stainless steel

(\*) Only for serie SR

General characteristics

<b>Mounting of solenoid valves</b>	Namur Std.	
<b>Mounting of devices</b>	Namur V DI	Namur V DE 3845 Std.
<b>Coupling according</b>	ISO 5211	DIN 3337
<b>Marking</b>	CE	Ex II 2 GdC LCIE 05 AR 022
<b>Test and certificates</b>		
<b>Quality assurance</b>	ISO 9001	

SR1750 / DA1750

copyright © by  
FERGO® Armaturen GmbH

Mainstrasse 26-30  
D41469 Neuss

Tel.: +49(0) 2137 - 9 30 80-0  
Fax: +49(0) 2137 - 9 30 80-99

Web: www.fergo.biz  
E-Mail: info@fergo.biz

**fergo**