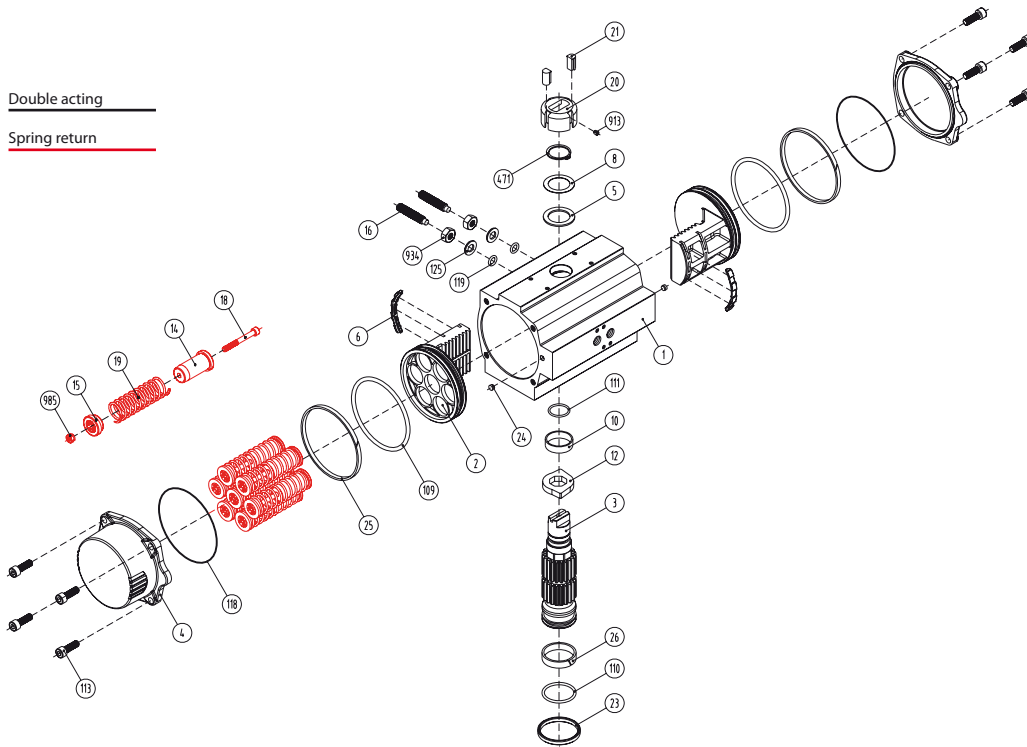


Double acting

Spring return



Dimensions\*

A	A'	B	C	D	E	F	I	R	ØS	ISO	ØL	M x V	ISO	ØL'	M' x V'	ØT	X	U
560	439	249	212,5	116	114	16	15	36	48,5	F10	102	M10 x 17	F14	140	M16 x 26	100	4	49

Max. pressure	Rotation	Screw stroke adjustment		Chamber Ø (mm)	Air volume (L)		Stroke Time (Sec. (A))		Operating Temperature (°C)		
		Opening	Closing		Opening	Closing	STD (std.)	HT (high temp.)	LT (low temp.)		
8 bar	90° ± 5°	for 1° need 1/3 turn		180	6,95	4,64	D 1,2	D 1,5	NBR O-ring	FPM O-ring	Silicone O-ring

Double acting actuator „DA“ torque output in [Nm]

Typ	3 bar		3,5 bar		4 bar		4,5 bar		5 bar		5,5 bar		6 bar <sup>2</sup>		6,5 bar		7 bar		8 bar		Kg
	0°	90°	0°	90°	0°	90°	0°	90°	0°	90°	0°	90°	0°	90°	0°	90°	0°	90°	0°	90°	
D	519		606		692		779		865		952		1038		1125		1211		1384		25,8

Spring return actuator „SR“ torque output in [Nm]

Typ	3 bar		3,5 bar		4 bar		4,5 bar		5 bar		5,5 bar		6 bar (A)		6,5 bar		7 bar		8 bar		Spring stroke		Kg
	0°	90°	0°	90°	0°	90°	0°	90°	0°	90°	0°	90°	0°	90°	0°	90°	0°	90°	0°	90°	End	Start	
S06	373	289	460	376	546	462	633	549	720	635	806	722	893	808	979	895	1066	981	1239	1154	171	271	30,1
S08	325	213	411	299	498	386	584	472	671	559	758	645	844	732	931	818	1017	905	1190	1087	229	361	31,1
S10	276	136	363	222	449	309	536	395	622	482	709	569	795	655	882	742	969	828	1142	1001	286	451	32,2
S12					401	232	487	319	574	405	660	492	747	578	833	665	920	751	1093	924	343	541	33,2
S14 <sup>2</sup>									525	329	612	415	698	502	785	588	871	675	1044	848	400	631	34,3

<sup>2</sup>Standard construction

Materials

1	<b>Body</b>	Aluminium hard anodized
2	<b>Piston</b>	Aluminium
3	<b>Pinion</b>	Nickel plated carbon steel
4	<b>End caps</b>	Aluminium epoxy coated
5	<b>Soft piston washer</b>	Polyamide PA 6,6
6	<b>Slide piston</b>	Polyamide PA 6,6 + 30% G.F.
8	<b>Pinion washer</b>	Stainless steel
10	<b>Upper pinion bearing</b>	Hostalen RCH 1000
12	<b>Stop</b>	ASTMA 105
14	<b>(*) Springs long support</b>	Polyamide PA 6,6
15	<b>(*) Springs short support</b>	Polyamide PA 6,6
16	<b>Leveling screw</b>	Stainless steel
18	<b>(*) Bolt</b>	Stainless steel
19	<b>(*) Spring</b>	DIN 2076 - D-5,6
20	<b>Position indicator</b>	Polyamide
21	<b>Cam</b>	Polyamide
23	<b>Centering ring</b>	Nickel plated carbon steel
24	<b>Plug air stop</b>	NBR
25	<b>Slide guide</b>	Polyamide PA 6,6 + 30% G.F.
26	<b>Lower pinion bearing</b>	Hostalen RCH 1000
109	<b>O-ring</b>	NBR
110	<b>O-ring</b>	NBR
111	<b>O-ring</b>	NRB
113	<b>Bolt</b>	Stainless steel
118	<b>O-ring</b>	NBR
119	<b>O-ring</b>	NBR
125	<b>Washer</b>	Stainless steel
913	<b>Set screw</b>	Stainless steel
471	<b>External circlip</b>	Stainless steel
934	<b>Nut</b>	Stainless steel
985	<b>(*) Nut</b>	Stainless steel

(\*) Only for serie SR

General characteristics

<b>Mounting of solenoid valves</b>	Namur Std.	
<b>Mounting of devices</b>	Namur V DI	Namur V DE 3845 Std.
<b>Coupling according</b>	ISO 5211	DIN 3337
<b>Marking</b>	CE	Ex II 2 GdC LCIE 05 AR 022
<b>Test and certificates</b>		
<b>Quality assurance</b>	ISO 9001	

SR1200 / DA1200

copyright © by  
FERGO® Armaturen GmbH

Mainstrasse 26-30  
D41469 Neuss

Tel.: +49(0) 2137 - 9 30 80-0  
Fax: +49(0) 2137 - 9 30 80-99

Web: www.fergo.biz  
E-Mail: info@fergo.biz

**fergo**