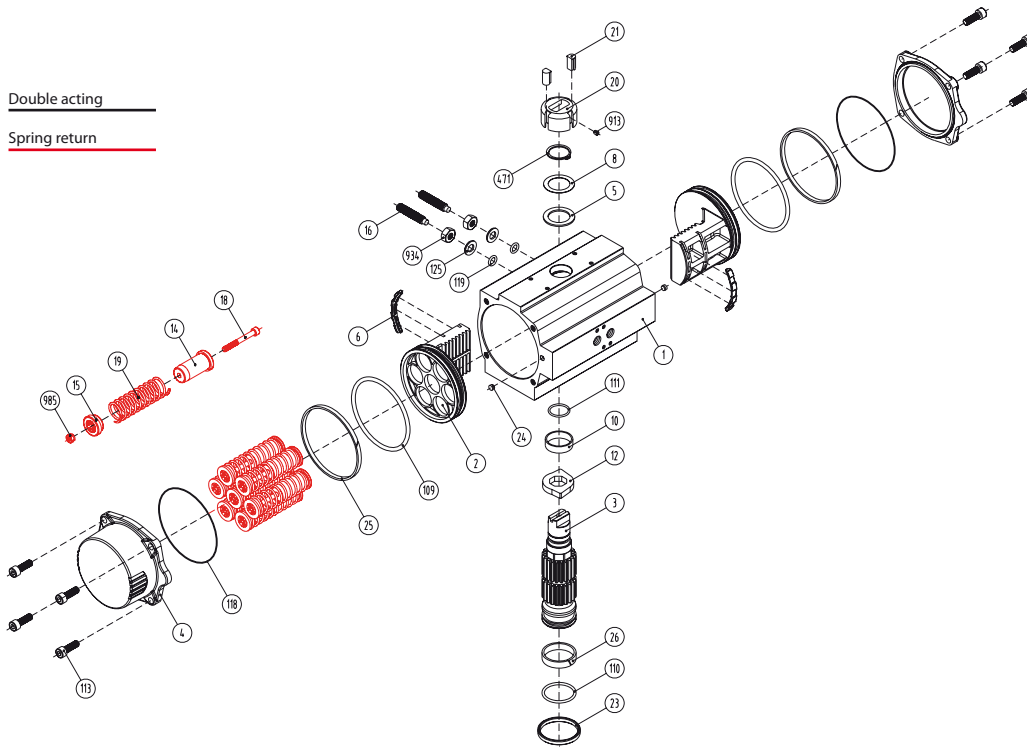


Double acting

Spring return



Dimensions*

A	A'	B	C	D	E	F	I	R	ØS	ISO	ØL	M x V	ISO	ØL'	M' x V'	ØT	X	U
348,5	273	182	152,5	86	80	16	12	22	28,5	F07	70	M8 x 14	F10	102	M10 x 20	70	3	29

Max. pressure	Rotation	Screw stroke adjustment	Chamber Ø (mm)	Air volume (L)		Stroke Time (Sec. (A))		Operating Temperature (°C)		
				Opening	Closing	Opening	Closing	STD (std.)	HT (high temp.)	LT (low temp.)
8 bar	90° ± 5°	for 1° need 1/3 turn	120,5	1,96	1,73	D 0,3	D 0,4	NBR O-ring	FPM O-ring	Silicone O-ring
						S 0,7	S 0,85	-30°...+100°C	-15°...+150°C	-40°...+80°C

Double acting actuator „DA“ torque output in [Nm]

Typ	3 bar		3,5 bar		4 bar		4,5 bar		5 bar		5,5 bar		6 bar ²		6,5 bar		7 bar		8 bar		Kg
	0°	90°	0°	90°	0°	90°	0°	90°	0°	90°	0°	90°	0°	90°	0°	90°	0°	90°	0°	90°	
D	145	170	170	194	194	218	218	242	267	267	291	291	315	339	339	388	388	388	388	388	8,5

Spring return actuator „SR“ torque output in [Nm]

Typ	3 bar		3,5 bar		4 bar		4,5 bar		5 bar		5,5 bar		6 bar (A)		6,5 bar		7 bar		8 bar		Spring stroke		Kg
	0°	90°	0°	90°	0°	90°	0°	90°	0°	90°	0°	90°	0°	90°	0°	90°	0°	90°	0°	90°	End	Start	
S06	102	75	126	99	151	123	175	148	199	172	223	196	247	220	247	245	296	269	344	317	51	83	9,65
S08			112	76	136	100	160	124	185	148	209	173	233	197	257	221	281	245	330	294	68	111	9,92
S10					122	76	146	101	170	125	194	149	219	173	243	198	267	222	315	270	85	138	10,20
S12							131	77	156	101	180	126	204	150	228	174	523	198	301	247	102	166	10,50
S14 ²									165	102	190	126	214	151	238	175	287	223	319	193	193	10,80	

²Standard construction

Materials

1	Body	Aluminium hard anodized
2	Piston	Aluminium
3	Pinion	Nickel plated carbon steel
4	End caps	Aluminium epoxy coated
5	Soft piston washer	Polyamide PA 6,6
6	Slide piston	Polyamide PA 6,6 + 30% G.F.
8	Pinion washer	Stainless steel
10	Upper pinion bearing	Hostalen RCH 1000
12	Stop	ASTMA 105
14	(*) Springs long support	Polyamide PA 6,6
15	(*) Springs short support	Polyamide PA 6,6
16	Leveling screw	Stainless steel
18	(*) Bolt	Stainless steel
19	(*) Spring	DIN 2076 - D-5,6
20	Position indicator	Polyamide
21	Cam	Polyamide
23	Centering ring	Nickel plated carbon steel
24	Plug air stop	NBR
25	Slide guide	Polyamide PA 6,6 + 30% G.F.
26	Lower pinion bearing	Hostalen RCH 1000
109	O-ring	NBR
110	O-ring	NBR
111	O-ring	NRB
113	Bolt	Stainless steel
118	O-ring	NBR
119	O-ring	NBR
125	Washer	Stainless steel
913	Set screw	Stainless steel
471	External circlip	Stainless steel
934	Nut	Stainless steel
985	(*) Nut	Stainless steel

(*) Only for serie SR

General characteristics

Mounting of solenoid valves	Namur Std.
Mounting of devices	Namur V DI Namur V DE 3845 Std.
Coupling according	ISO 5211 DIN 3337
Marking	CE II 2 GDC LCIE 05 AR 022
Test and certificates	
Quality assurance	ISO 9001

SR300 / DA300

copyright © by
FERGO® Armaturen GmbH

Mainstrasse 26-30
D41469 Neuss

Tel.: +49(0) 2137 - 9 30 80-0
Fax: +49(0) 2137 - 9 30 80-99

Web: www.fergo.biz
E-Mail: info@fergo.biz

fergo